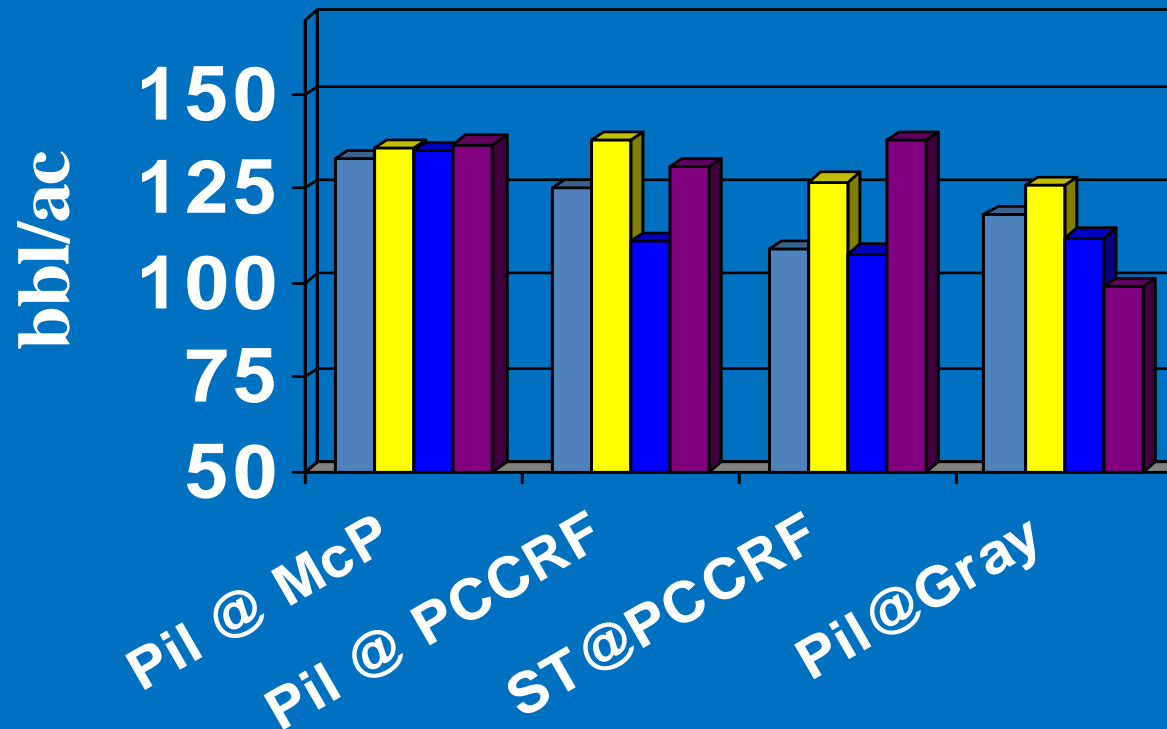


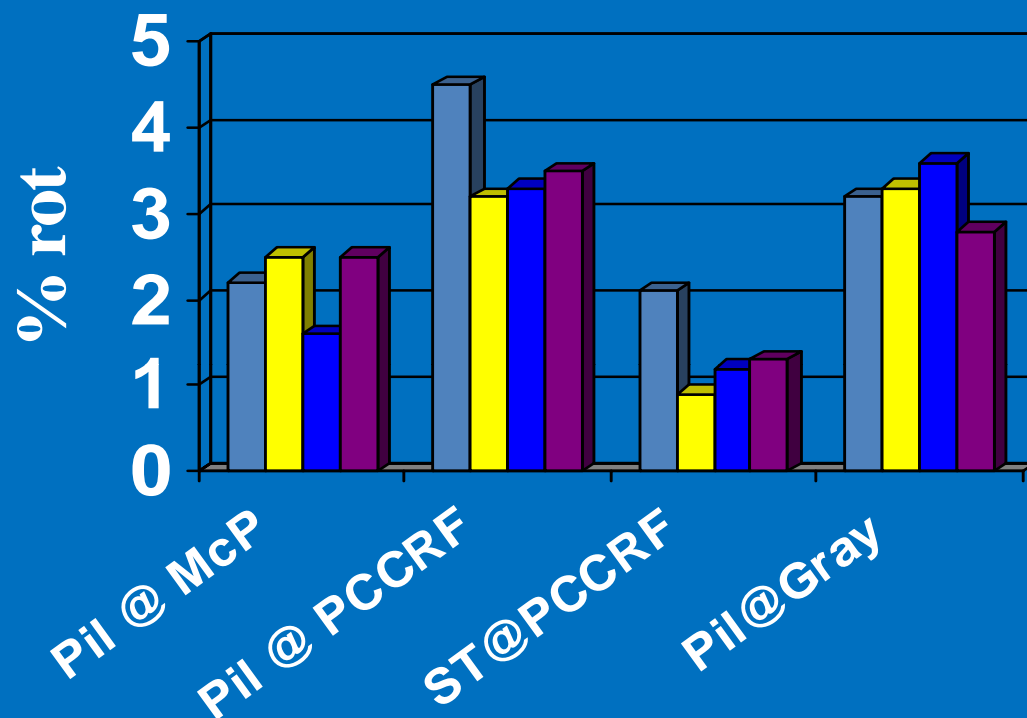
treatment	Yield (bbl/ac)			
	Pilgrim– McPhail	Pilgrim- Gray	Pilgrim – PCCRF	Stevens- PCCRF
Normal N	138	107	132	113
Extra N (21-0-0 3x @ 10 lbs N/ac)	144	125	112	129
	NS	*	*	*
Grower treatment: (Echo @ set + Dithane @ 14 days post-set)	133	118	125	109
Grower treatment + Echo @ 50% bloom	136	126	111	108
Grower treatment + Abound @ 50% bloom	135	112	138	127
Grower treatment + Indar @ 50% bloom	137	99	131	138
untreated	163	123	106	122
Lsd	27	22	27	13

Yield 2006 Bbl/ac



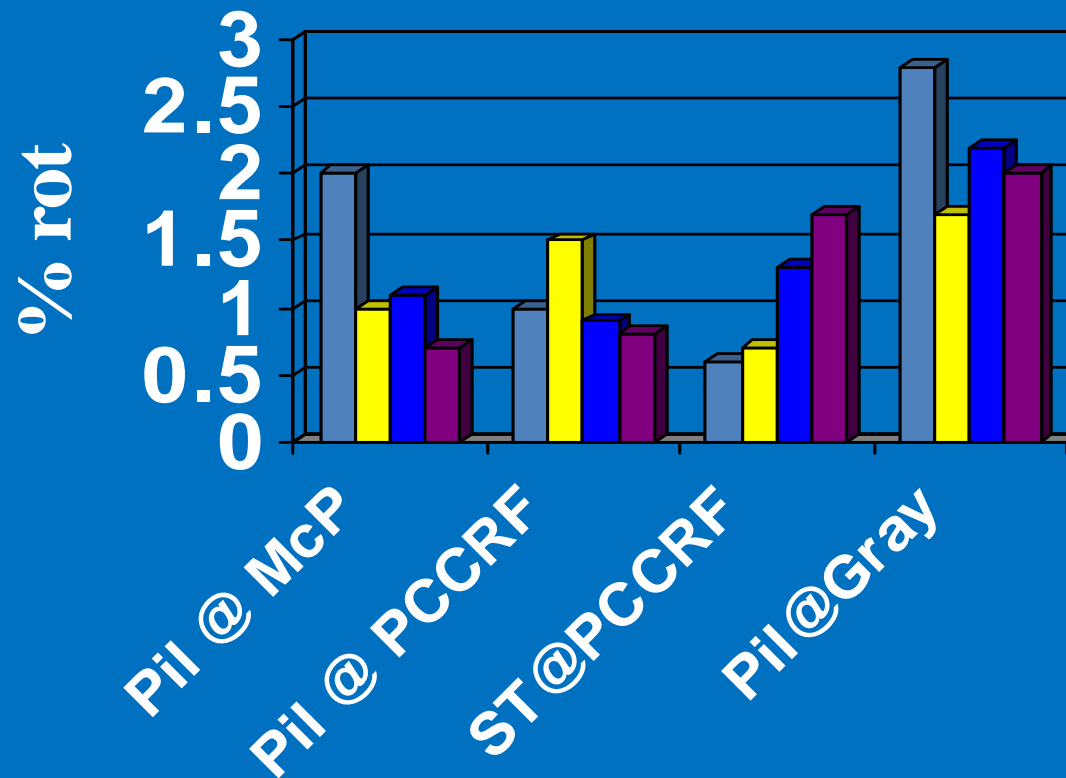
- grower trt (Bravo & Mancozeb @ set)
- grower trt + Abound 50% blm
- grower trt + Echo 50% bloom
- grower trt + Indar 50% bloom

Fruit Rot 2066 Fruit Rot @ Harvest



- grower trt (Bravo & Mancozeb @ set)
- grower trt + Abound 50% blm
- grower trt + Echo 50% bloom
- grower trt + indar 50% bloom

Fruit Rot 2006 % Rot @ 6 weeks storage



- grower trt (Bravo/ Mancozeb @ set)
- grower trt + Abound @ 50% blm
- grower trt + Echo @ 50 blm
- grower trt + Indar @ 50% blm